

Mitochondrial DNA Part B Resources

ISSN: (Print) 2380-2359 (Online) Journal homepage: <http://www.tandfonline.com/loi/tmdn20>

The complete mitochondrial genome of *Linguatula serrata* (tongue worm) isolated from a dog and phylogenetic analysis

Tanian Naude, Sameer Pant, Mousa Tavassoli, Subir Sarker & Seyed Ali Ghorashi

To cite this article: Tanian Naude, Sameer Pant, Mousa Tavassoli, Subir Sarker & Seyed Ali Ghorashi (2018) The complete mitochondrial genome of *Linguatula serrata* (tongue worm) isolated from a dog and phylogenetic analysis, *Mitochondrial DNA Part B*, 3:1, 357-358, DOI: [10.1080/23802359.2018.1450679](https://doi.org/10.1080/23802359.2018.1450679)

To link to this article: <https://doi.org/10.1080/23802359.2018.1450679>



© 2018 The Author(s). Published by Informa UK Limited, trading as Taylor & Francis Group.



Published online: 14 Mar 2018.



Submit your article to this journal [↗](#)



Article views: 72



View related articles [↗](#)



View Crossmark data [↗](#)

The complete mitochondrial genome of *Linguatula serrata* (tongue worm) isolated from a dog and phylogenetic analysis

Tanian Naude^a, Sameer Pant^{a,b}, Mousa Tavassoli^c, Subir Sarker^d  and Seyed Ali Ghorashi^{a,b}

^aSchool of Animal and Veterinary Sciences, Charles Sturt University, Wagga Wagga, Australia; ^bGraham Centre for Agricultural Innovation, Wagga Wagga, Australia; ^cFaculty of Veterinary Medicine, Urmia University, Urmia, Iran; ^dDepartment of Physiology, Anatomy and Microbiology, La Trobe University, Victoria, Australia

ABSTRACT

The complete mitogenome of *Linguatula serrata* isolated from nasal cavity of a dog was characterized for the first time. The total size of the circular mitogenome was 15,328 bp consisting of 37 genes including 13 protein coding genes, 22 tRNA genes, two rRNA genes and two control regions. Phylogenetic tree was constructed based on 17 closely related species and their genetic relationship with *Linguatula serrata* was analysed.

ARTICLE HISTORY

Received 21 February 2018
Accepted 6 March 2018

KEYWORDS

Linguatula serrata; complete mitogenome; phylogenetic tree

Linguatula serrata is an aberrant arthropod of the class Pentastomida (Hendrix 1998). The adult parasite is found in the nasopharynx of canids (Khalil and Schacher 1965). The larval form develops to the infective nymphal stage in visceral organs of herbivores and canids can be infected by consuming uncooked infected visceral organs of the herbivorous hosts (Soulsby 1982). Linguatulosis is a zoonotic disease and has been reported from human cases from different parts of the world and particularly Middle East (Schacher et al. 1969; Sadjadi et al. 1998; Maleky 2001). Human beings can be infected by both the nymph stage and egg, which are called Halzoun syndrome and visceral linguatulosis, respectively (Lazo et al. 1999). Human infection may occur via consumption of raw or undercooked liver or visceral organs associated with lymph nodes of infected animals (Beaver 1984; Drabick 1987; el-Hassan et al. 1991).

Total genomic DNA was extracted from individual *Linguatula serrata* adult worm (Accession No. IR-17-Dog-Urmia) as described before (Ghorashi et al. 2016).

The complete mitochondrion genome was sequenced using Illumina sequencing and assembled using Novoplasty software (Dierckxsens et al. 2017). *Linguatula serrata* mitogenome was annotated using MITOS (Bernt et al. 2013) and has a circular mitochondrial genome of 15,328 bp containing 4797 Adenine, 4438 Thymine, 1016 Guanine, and 5077 Cytosine. The GC content was 39.8%. The total length of coding sequences was 9678 base pairs (63.1% of the total sequence). The lengths of 12S and 16S ribosomal RNA were 537 and 623 base pairs, respectively. The gene arrangement was similar to the complete mitochondrial DNA of *Armillifer agkistrodontis* (Li et al. 2016). The complete *Linguatula serrata*

mitogenome has been deposited at the GenBank under accession no. MG951756.

Complete mitochondrion DNA sequences of 14 Arthropoda including two pentastomida (*Speleonectes tulumensis* (AY456190), *Armillifer armillatus* (AY456186), *Armillifer agkistrodontis* (KX686568), *Abacion magnum* (JX437062), *Nobia grandis* (KF720334), *Lepas australis* (KM017964), *Pollicipes polymerus* (AY456188), *Squilla empusa* (DQ191684), *Scutigera caudata* (DQ666065), *Rhipicephalus microplus* (KP143546), *Ixodes ricinus* (KF197115), *Ammothea carolinensis* (GU065293), *Hutchinsoniella macracantha* (AY456189), *Argulus americanus* (AY456187)) and three Nematoda (*Trichinella trichuria* (GU385218), *Trichinella spiralis* (AF293969), *Trichuris ovis* (JQ996232)) available in the GenBank, were retrieved and aligned with draft *Linguatula serrata* sequence. The *Fasciola gigantica* (KF543342) complete mitochondrion genome (Trematode) was included as out group. The sequences were analysed using ClustalW (Thompson et al. 1994) within DNASTAR software and BioEdit Sequence Alignment Editor (version 6.0.9.0). Multiple sequence alignment was generated using a gap open penalty of 10 and gap extension penalty of 1. The phylogenetic tree was generated using the maximum likelihood (ML) method. The phylogeny was carried out with the bootstrap method using 1000 bootstrap replications.

The pentastomida (tongue worms) were genetically closer to Nematodes compared to Arthropods. Among the three pentastomida, *Armillifer armillatus* and *Armillifer agkistrodontis* were more closely related when compared to *Linguatula serrata* (Figure 1). The complete mitogenome of *Linguatula serrata* could potentially assist in proper classification of the

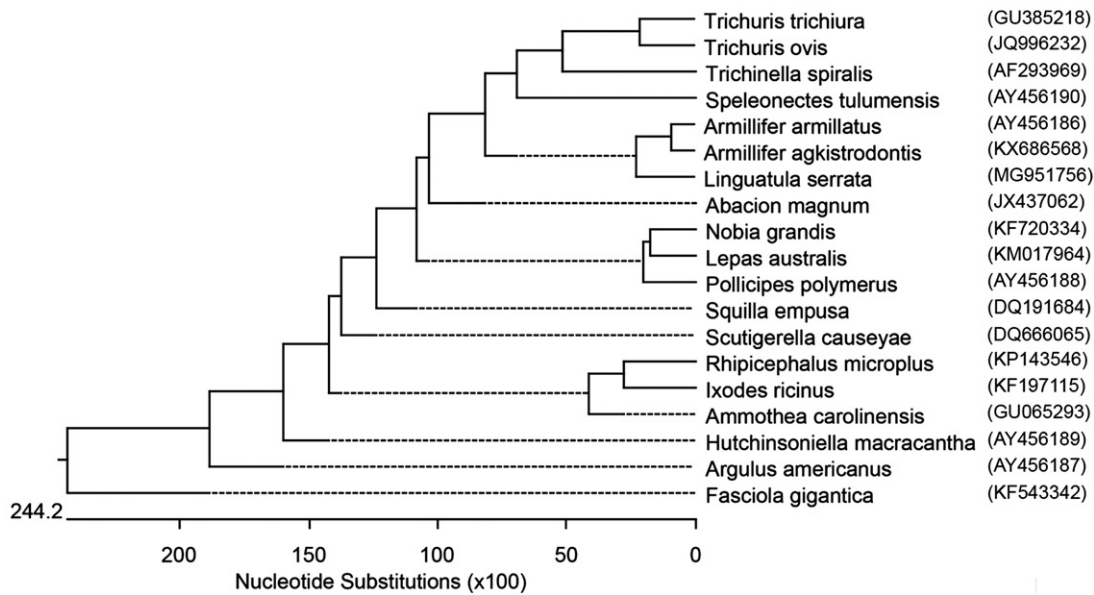



Figure 1. Phylogenetic tree generated by Clustal W software. *Linguatula serrata* has been placed into the class of maxillopoda formed a sister clade to the pentastomids *Armillifer agkistrodantis* and *Armillifer armillatus*.

parasite, and in the development of DNA based genotyping and diagnostics.

Disclosure statement

The authors report no conflicts of interest. The authors alone are responsible for the content and writing of the paper.

ORCID

Subir Sarker  <http://orcid.org/0000-0002-2685-8377>

References

- Beaver PC. 1984. Clinical parasitology. Philadelphia: Lea & Febiger.
- Bernt M, Donath A, Juhling F, Externbrink F, Florentz C, Fritsch G, Putz J, Middendorf M, Stadler PF. 2013. MITOS: improved de novo metazoan mitochondrial genome annotation. *Mol Phylogenet Evol.* 69:313–319.
- Dierckx N, Mardulyn P, Smits G. 2017. NOVOPlasty: de novo assembly of organelle genomes from whole genome data. *Nucleic Acids Res.* 45:e18.
- Drabick JJ. 1987. Pentastomiasis. *Rev Infect Dis.* 9:1087–1094 (in English).
- el-Hassan AM, Eltoun IA, el-Asha BM. 1991. The Marrara syndrome: isolation of *Linguatula serrata* nymphs from a patient and the viscera of goats. *Trans R Soc Trop Med Hyg.* 85:309 (in English).
- Ghorashi SA, Tavassoli M, Peters A, Shamsi S, Hajipour N. 2016. Phylogenetic relationships among *Linguatula serrata* isolates from Iran based on *18S rRNA* and mitochondrial *cox1* gene sequences. *Acta Parasitol.* 61:195–200.
- Hendrix CM. 1998. Diagnostic veterinary parasitology. St. Louis (MO): Mosby.
- Khalil GM, Schacher JF. 1965. *Linguatula serrata* in relation to Halzoun and the Marrara syndrome. *Am J Trop Med Hyg.* 14:736–746 (in English).
- Lazo RF, Hidalgo E, Lazo JE, Bermeo A, Llaguno M, Murillo J, Teixeira VP. 1999. Ocular linguatuliasis in Ecuador: case report and morphometric study of the larva of *Linguatula serrata*. *Am J Trop Med Hyg.* 60:405–409 (in English).
- Li J, He FN, Zheng HX, Zhang RX, Ren YJ, Hu W. 2016. Complete mitochondrial genome of a tongue Worm *Armillifer agkistrodantis*. *Korean J Parasitol.* 54:813–817.
- Maleky F. 2001. A case report of *Linguatula serrata* in human throat from Tehran, central Iran. *Indian J Med Sci.* 55:439–441 (in English).
- Sadjadi SM, Ardehali SM, Shojaei A. 1998. A case report of *Linguatula serrata* in human pharynx from Shiraz, southern Iran. *Med J Islam Repub Iran.* 12:193–194.
- Schacher JF, Saab S, Germanos R, Boustany N. 1969. The aetiology of Halzoun in Lebanon: recovery of *Linguatula serrata* nymphs from two patients. *Trans R Soc Trop Med Hyg.* 63:854–858 (in English).
- Soulsby E. 1982. Helminths arthropods and protozoa of domesticated animals. 7th ed. London: Baillière Tindall & Cassell Ltd.
- Thompson JD, Higgins DG, Gibson TJ. 1994. CLUSTAL W: improving the sensitivity of progressive multiple sequence alignment through sequence weighting, position-specific gap penalties and weight matrix choice. *Nucleic Acids Res.* 22:4673–4680.